

# Floating Installation

## Mannington Hardwood Floors

### Floating Installation Requirements & Procedures

Mannington  $\frac{1}{16}$ " ,  $\frac{1}{2}$ " , and  $\frac{3}{8}$ " thick engineered wood plank flooring 3" and wider may be installed using the floating method over numerous sub-floors, including concrete, plywood, underlayment grade composition board, ceramic tile, reinforced vinyl tile, sheet vinyl, and radiant-heated floors. With Mannington engineered wood flooring, expansion and contraction is minimal, making it ideal for any room in the home, from the attic to the basement. The floating method tends to be one of the easiest methods of installing engineered wood floors and is the only technique that works over unstable, lightweight concrete.



### Special Tools

- Appropriate Mannington Underlayment (see below for details)
- Mannington MegaGlue™ Adhesive (SKU #600021)
- Glue Scraper
- Spacing Wedges
- Safety Glasses
- Tapping Block (SKU #TPBK009X)
- Pry Bar
- 3M 2090 Long Mask Tape or Duct Tape



### Mannington Underlayments

#### AquaBarrier II™

AquaBarrier II is an underlayment sheeting that combines a foam cushion layer and a moisture barrier film all in one sheet. The underlayment also has a built-in edge sealing system when more than one sheet is needed in the installation area. AquaBarrier II is to be used for below-grade or on-grade sub-floors where moisture is a concern.



**AquaBarrier II—Jumbo Roll (Item #600001)**  
1 roll of underlayment (300 sq ft)

## ComfortBarrier™

ComfortBarrier is an underlayment foam cushion to be used for above-grade subfloors ONLY where subfloor moisture is not a concern.



**ComfortBarrier (Item #600002)**  
1 roll of underlayment (300 sq ft)

## Mannington® Hush Underlayment

### Invented, Perfected, and Manufactured by Mannington

Made from advanced vinyl foam construction, Mannington Hush Underlayment stops footsteps in their tracks. When installed properly, this new underlayment system “deadens” the sounds made on a Mannington Hardwood Floor. Mannington Hush can be installed over any level of subfloor and it is available in 300 sq ft rolls.



**Mannington Hush**  
1 roll of underlayment (300 sq ft)

## ProEssentials® II Kit (SKU# 600040)

The Mannington ProEssentials® II Kit contains the following items for a successful installation:

AquaBarrier II Underlayment (coverage 110 sq ft) and MegaGlue Adhesive



**NOTE:** While the floating method offers some advantages, there are some things of which you should be aware: (1) The floor may have a hollow sound when walking on it. (2) The wood rests on the subfloor with its own weight, which may cause the floor to have slight vertical movement. (3) A damaged plank cannot be replaced as simply as in a staple-down, nail-down, or glue-down installation.

## Job Preparation

Undercut all doorcasings  $\frac{1}{16}$ " higher than the thickness of the flooring and underlayment to be installed. Place a scrap piece of plank and a sheet of underlayment against the doorcasing to act as a guide and cut the doorcasing with a hand saw or power jamb saw set to the correct height.

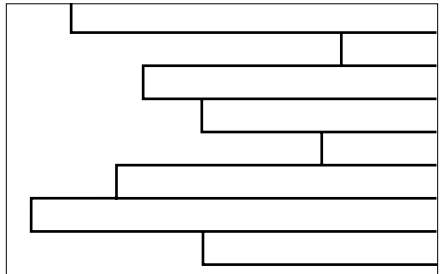


After deciding the direction in which the planks will run, measure the width of the room (the dimension perpendicular to the direction of the flooring). The last row of flooring should be no less than  $1\frac{1}{2}$ " wide. If it is less, we recommend cutting the starter row narrower. This will require extra cutting but it will make the rest of the installation easier and faster.



## “Racking” the Floor

This process is essential to achieve a random appearance. Start by either using random length planks found in the carton or by cutting four to five planks in random lengths, differing by at least 6". When starting these first few rows or courses, make certain to always measure from the tongue end of the plank when cutting. As you continue working across the floor be sure to maintain the 6" minimum between end joints on all adjacent rows. Randomly install different lengths to avoid a patterned appearance. Never waste materials; the ends cut from starter rows should be used at the opposite side of the room to complete rows or used to start the next row.



**NOTE:** As stated earlier, it is extremely important to blend planks from several cartons to ensure a good balance of color, graining, and plank length.

## Installation of ComfortBarrier or Mannington Hush Underlayment

If the installation area is above ground and protection against moisture is not a concern, you may install ComfortBarrier or Hush Underlayment. Please note, the directions outlined below explain the installation and use of AquaBarrier II Underlayment. Please follow these general guidelines. However, when the installation requires more than one sheet of ComfortBarrier or Hush, simply butt each end together and seal with duct tape.

## Installation of AquaBarrier II Underlayment

AquaBarrier II Underlayment eliminates the need for a separate moisture barrier film and underlayment cushion. You will need one (1) roll of AquaBarrier II for every four (4) cartons of wood flooring installed. The amount of MegaGlue Adhesive required depends on the plank width being installed. Please see MegaGlue Adhesive Requirements chart on page 16.3 for further details.

Install AquaBarrier II by laying it out, poly side facing up. Seal all seams using the built-in edge sealing tape system. Tape any relief cuts or butt seams with duct tape.

**Install one sheet of AquaBarrier II Underlayment net along the starting wall. Unroll only one sheet at a time during plank installation to prevent damaging the underlayment. If any part of the AquaBarrier II Underlayment is punctured or damaged during installation, seal the area with duct tape.**



**Position  $\frac{5}{16}$ " spacing wedges around the entire work area. (Put two wedges together, face to face, and place on edge against vertical surfaces.) This will help prevent squeaking and scratching on the adjacent walls due to the up-and-down movement of the floor.**



**Before starting to glue planks, dry-lay the entire first two rows on top of the AquaBarrier II Underlayment. Begin in the upper right corner of the work area with the groove side of the planks facing the wall. Place spacing wedges along the walls on both the ends and sides of all planks.**



An easy way to mark the last plank in a row is to place the plank in position with the tongue against the tongue of the previously laid plank and the end of the plank against the spacing wedge. Mark across the plank with a pencil and saw along this line. Place cut plank with cut end toward wall and pull into place with a pry bar.



Begin the next row by using the leftover piece from the previously cut plank. Now lay the remainder of the second row and tap into place with a tapping block.



**NOTE:** If any plank is shorter than 8" in length, do not install it; instead, cut a new piece to measure at least 8" long.

## Job Installation

Cut the Mannington MegaGlue adhesive applicator nozzle at a 45° angle with a utility knife. Do not cut off any part of the cap locking ring around the nozzle.



In a floating floor installation, the flooring is NOT nailed or glued to the underlayment, but is glued in the plank's groove only. Apply Mannington MegaGlue adhesive to the bottom of groove along the entire length and on the end of each plank. Do not completely fill the groove with adhesive.



The installation sequence is critical and provides stability to the first two rows. **Proper alignment is critical.** Misaligned starter rows can ruin the entire installation. Closely follow the next several photos and instructions to obtain the proper gluing sequence for the first few rows of planks. To start, glue the first plank in the second row to the first plank in the starter row, and so on.



Use a tapping block and a hammer to push glued planks together until no gaps are seen. Immediately wipe away any excess adhesive with a glue scraper or a clean damp cloth.



**CAUTION:** Never use a hammer or mallet directly on the flooring.

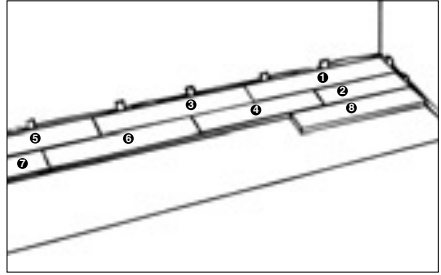
Glue the next plank to the plank in the previous row. Apply adhesive only to the width end of the plank. Tap the planks together carefully with a tapping block and hammer. Remember to continually remove adhesive squeezed up between the joints with a glue scraper or a clean damp cloth.



Glue the next plank in the same row to the previously glued plank from the previous row. Apply adhesive to both the length and width edges of the plank.



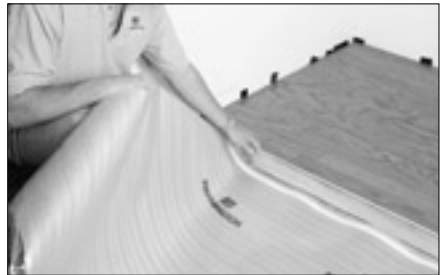
Continue to install wood flooring using this stair-stepping method, as illustrated. Simply install each plank according to the sequence of numbers shown.



At the end wall use a pry bar, if needed, to pull the ends of the planks tight. Continue laying the floor on top of the AquaBarrier II Underlayment, working right to left, laying plank after plank, row after row, tapping the planks together as you go. Be sure to continue using  $\frac{5}{16}$ " spacing wedges at all walls and obstructions throughout the installation.



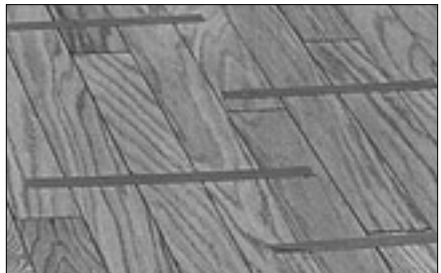
Once the first sheet of AquaBarrier II Underlayment is covered with wood flooring, install the second sheet. Butt the two foam edges together with the extra poly sheet overlapping the first sheet already installed.



To adhere the two sheets of underlayment together, pull off the white strip to reveal the built-in edge sealing system underneath. As you peel off the strip press the overlapping poly sheeting onto the first sheet of underlayment.



After several runs of planks are down, lay perpendicular strips of 3M 2090 Long Mask "Blue" tape 12" apart to hold the planks securely. Repeat this process as the installation progresses.



The last row will most likely require cutting to width but it should be no less than 1½" wide. To do this, lay the plank on top of, and edge-to-edge with, the plank in the next-to-the-last row. Trace the wall contour on the last plank using a scrap piece of plank and cut as required.



Install cut planks and pull into place with a pry bar. Install spacing wedges between planks and wall. Allow floor to dry for a minimum of 12 hours before removing all spacing wedges and allowing foot traffic. Sweep the floor to remove all dust and dirt, taking care not to scratch the finish.



Remove any glue residue using a white 3M pad dampened with mineral spirits. Follow up with Mannington UltraClean® spray cleanser.



## Final Inspection

After the floor is cleaned, inspect the floor for nicks, scratches, and planks that may have moved during installation, as well as any other imperfections that need attention. Touch up nicks and scratches with Mannington Hardwood Floors touch-up products. In most climates, the floor can accept foot traffic within 12 hours. Damp or humid sites may require additional drying time.

## Floor Protection During Construction

Always protect the surface of installed flooring during construction by laying a quality felt paper over the floor and taping it to the baseboards. Never use plastic or polyethylene sheeting to cover the floor since they trap moisture. The covering material must allow the floor to breathe.